

**Sydney Football Stadium
Redevelopment Stage 2
Environmental Monitoring Summary –
April 2020**

**Author: Cameron Newling
Date: 15 May 2020**

Table of contents

1	Vibration Monitoring	3
1.1	Real time monitoring	3
1.2	Attended Monitoring	4
2	Noise Monitoring	5
2.1	Real time monitoring	5
2.2	Attended Monitoring	6
3	Dust Monitoring	6
3.1	Real Time Monitoring	6
3.2	Dust Deposition Monitoring	7

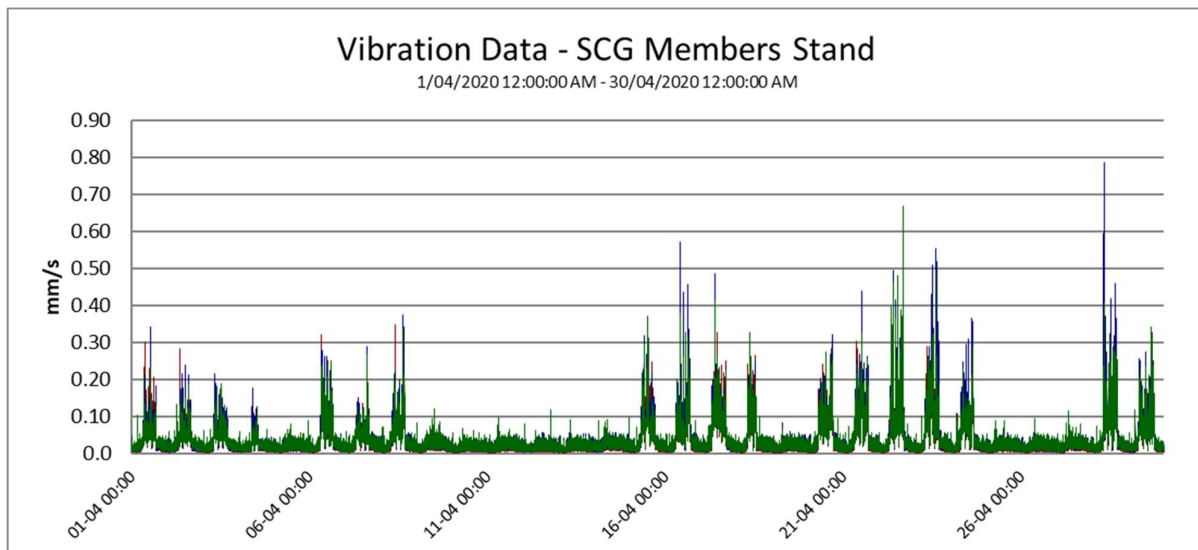
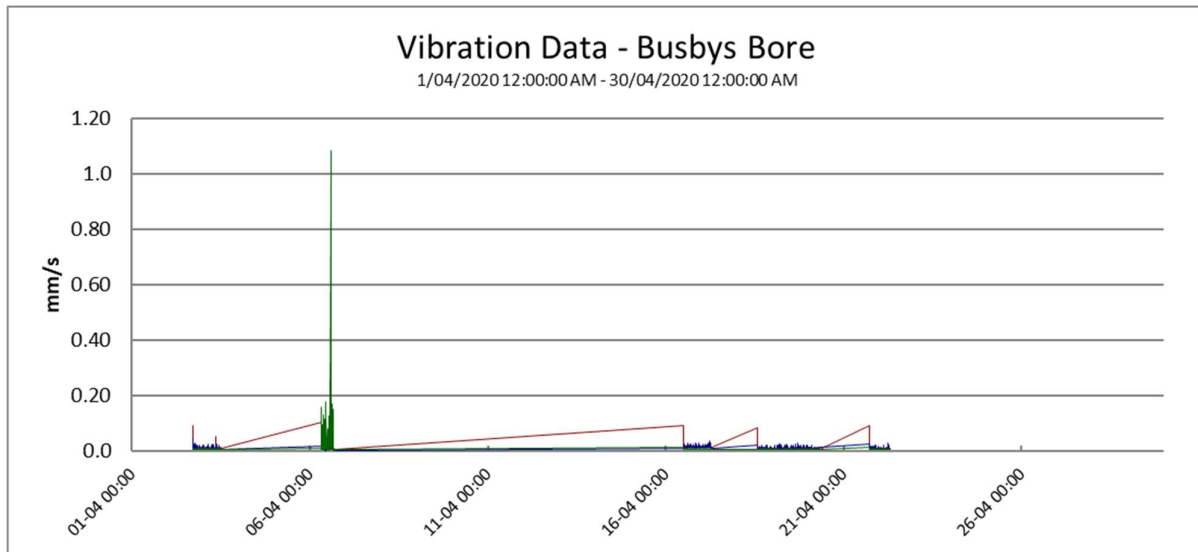
1 Vibration Monitoring

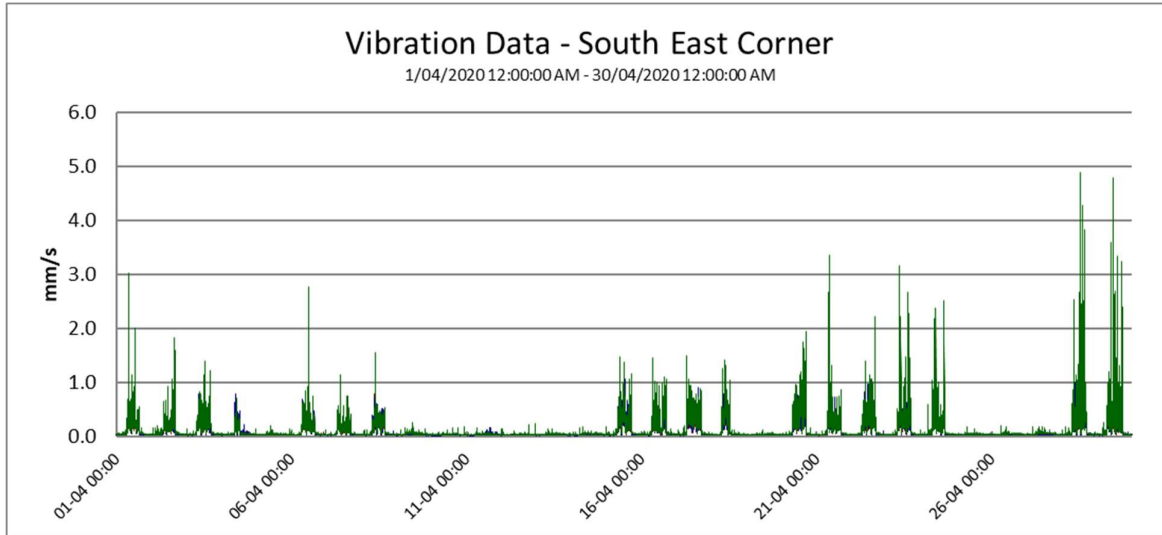
1.1 Real time monitoring

1.1.1 Results

Real time vibration monitoring is conducted in 3 locations

- Busbys Bore – Criteria of 5mm/s
- SCG Members Stand – Criteria of 3mm/s
- South Eastern Boundary adjacent to Fox Studios – adopted criteria of 7.5mm/s





1.1.2 Discussion

Results were compliant with the relevant criteria during the period.

1.2 Attended Monitoring

None carried out during the period.

2 Noise Monitoring

2.1 Real time monitoring

Real time monitors are located at the following locations

- Kira Childcare
- North East Boundary near Moore Park Road

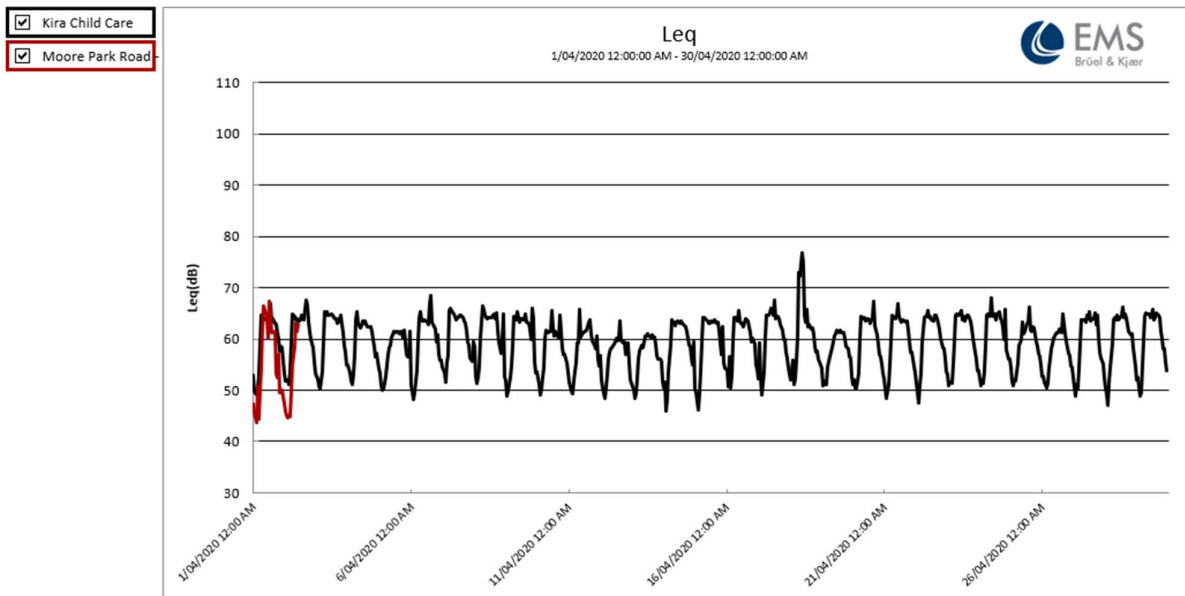
The adopted criteria is as per the conditions of the Development Consent below:

C7. All works that generate noise exceeding 75dB(A) LAeq (15mins) are subject to the intra-day respite periods, as approved by the Planning Secretary in the CNVMP in condition B28

B28e(iv). the following intra-day respite periods (as defined by ICNG) for works exceeding 75dB(A) LAeq(15 mins), unless otherwise agreed with the identified sensitive receivers such as UTS, Kira Child Care Centre and / or Fox Studios and evidence of the agreement provided to the Planning Secretary, prior to the commencement of the works:

- *in continuous blocks not exceeding 3 hours each with one hour of respite every three hours block;*
- *scheduling of works outside of the examination time for educational establishments; and*
- *noise intrusive works commencing after 8am and be undertaken within the approved standard construction hours.*

2.1.1 Results



2.1.2 Discussion

Works were compliant with the criteria. 1 alert was received on Saturday the 18th April at the Kira Child Care Centre. The audio file indicated that a leaf blower was being used at the time and was not associated with the project activities.

2.2 Attended Monitoring

None carried out during the month.

3 Dust Monitoring

3.1 Real Time Monitoring

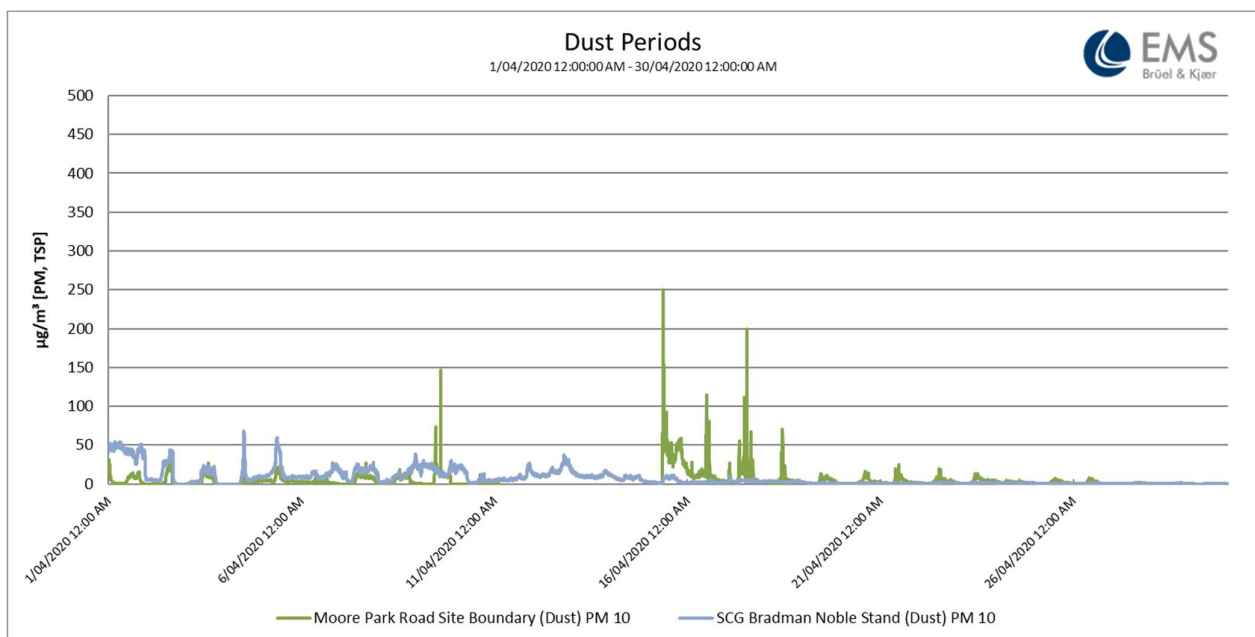
2 Real time dust monitors are installed on the site

- North eastern boundary near Moore Park Road
- South east boundary near Fox Studios

The criteria and trigger values are as below:

Trigger Stage	Averaging Period	Trigger Value ($\mu\text{g}/\text{m}^3$)	Action Required
1 Investigate	1 hour	85	Site Manager to undertake review of possible dust sources operating during the average period. Identify possible measures for these activities; action if deemed necessary.
	3 hour	80	
2 Action	1 hour	470	Site Manager to attend site and ensure implementation of the control. Effectiveness of control actions to be reviewed and escalate where appropriate.
	3 hour	160	
3 Stop Work	1 hour	940	Targeted shut down of dust-generating activities until the measured pollutant levels are below the stated trigger value. Identify long-term solutions to dust issues.
	3 hour	320	

3.1.1 Results



3.1.2 Discussion

The were no exceedances of the trigger levels.

3.2 Dust Deposition Monitoring

Gauge ID	Location	Trigger value g/m2/month	Result g/m2/month	Comment
DDG1	1	4	16	Sample displayed high percentage of organic matter and low percentage of soluble solids. This is most likely due to the trees present within the location of the gauge.
DDG1	2A	4	7.6	Sample displayed high percentage of organic matter and low percentage of soluble solids. This is most likely due to the presence of the adjacent SCG grass cricket nets and ongoing grass cutting.