

# New Grafton Correctional Centre

Community Update – August 2016

Infrastructure NSW has prepared an Environmental Impact Statement (EIS) for Stage 1 of the new Grafton Correctional Centre which, when complete, will accommodate up to 1,700 beds. The new complex will deliver hundreds of jobs to the region during and after construction and will create long-term economic opportunities locally through the procurement of goods and services.

You are invited to learn more about the project at a series of upcoming community information sessions.

## About the new Grafton Correctional Centre

The new Grafton Correctional Centre will be a safe and secure correctional facility servicing the northern part of NSW. It will be the primary correctional complex for all correction operations from the Queensland border in the north, Kempsey in the south-east and Tamworth in the south-west.

The complex will be responsible for remand, reception and placement for specified offender groups. It will feature state-of-the-art security and surveillance and will provide rehabilitation services to reduce reoffending.

It will be located on a 195-hectare site at Lavadia approximately 12.5 kilometres south-east of Grafton. Infrastructure NSW has started the planning approval process for the project which will come in two stages. Stage 1 is to determine the concept proposal and early works such as bulk excavation and site stabilisation works, and Stage 2 is approval for the actual design and construction of the facility by the preferred consortium.

Earlier this year, the NSW Government called for Expressions of Interest from the private sector to design, build, operate and maintain the new facility.

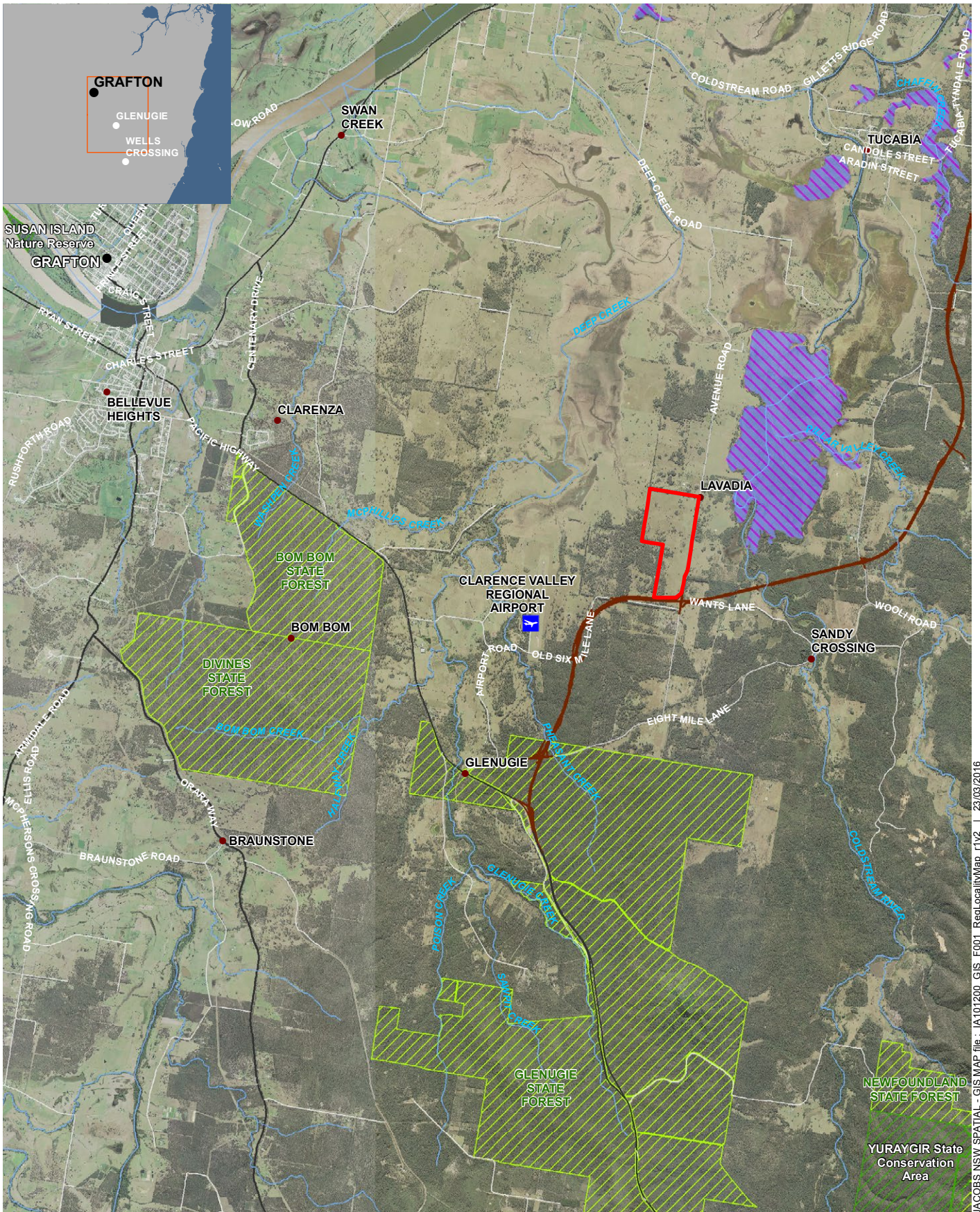
A short-list of three consortia was announced in June with the successful applicants, GEO Consortium, Greater Futures Partnership and Northern Pathways Partnership, now participating in the Request for Proposal stage. It is expected the successful consortium will be appointed mid-2017.

Construction of the new correctional complex is expected to begin in 2017 and be completed by 2020. It will be designed to operate in accordance with innovative best practice, both in providing safety and security and positive management of inmates.

## Planning update

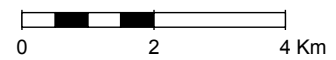
A State Significant Development (SSD) Application for Stage 1 of the project has been prepared to satisfy planning approval requirements of Part 4.1 of the Environmental Planning and Assessment Act 1979. The SSD includes a Stage 1 EIS covering the concept proposal and early works.

The EIS has been lodged with the Department of Planning and Environment and is on public exhibition from mid-August to mid-September. Following the exhibition, a Preferred Project Report will be prepared to address all submissions received. Approval for Stage 1 of the new Grafton Correctional Centre will then be sought from the Minister for Planning.



**Legend**

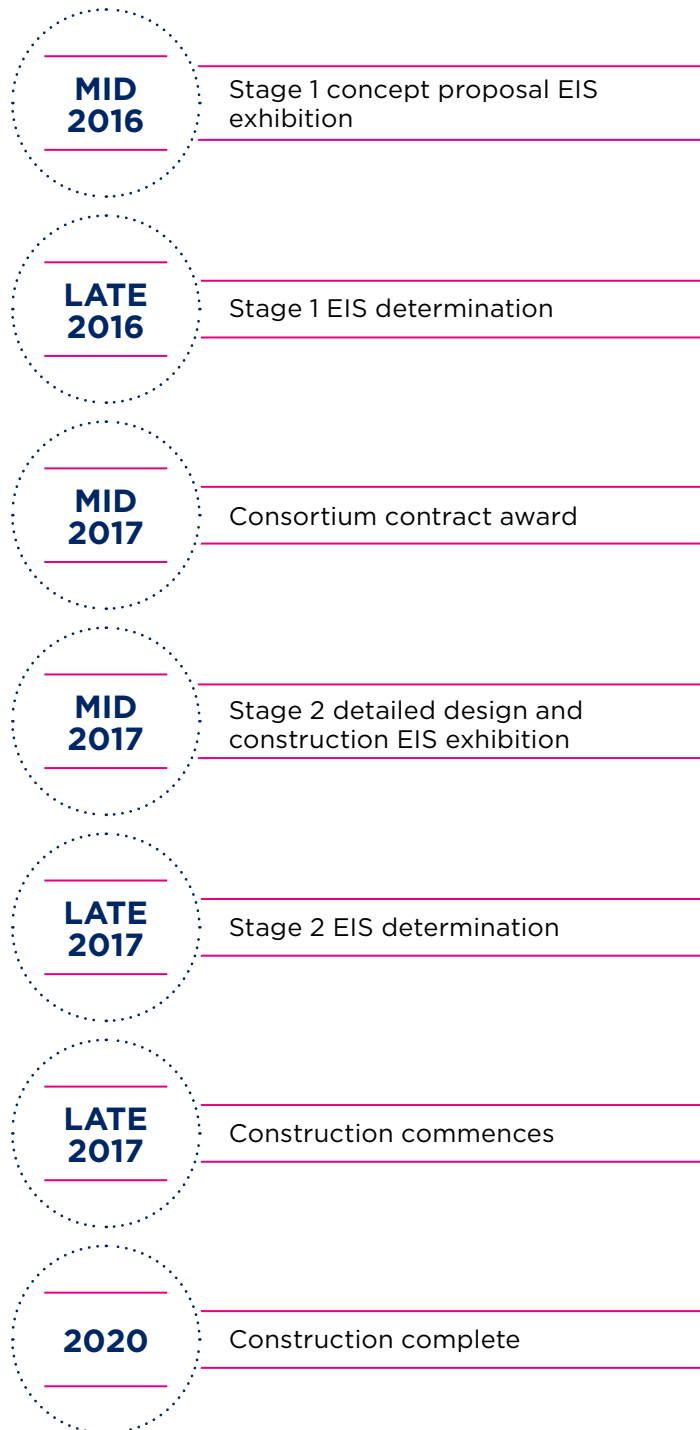
- The Project
- Grafton Bypass (proposed)
- SEPP 14 Wetlands
- National Park Reserves
- State Forests



1:125,000 @ A4



## INDICATIVE PROJECT TIMELINE



## How to make a submission

As part of the EIS assessment process, you are encouraged to make a formal submission to the Department of Planning and Environment. To view the EIS and make a submission go to [www.majorprojects.planning.nsw.gov.au](http://www.majorprojects.planning.nsw.gov.au) All submissions must be received by the end of the submission period.

Updates about the projects will also be available on our website [www.insw.com/projects-nsw](http://www.insw.com/projects-nsw)

### COMMUNITY INFORMATION SESSIONS

If you would like to find out more about new Grafton Correctional Centre, the project team and technical experts will be available to discuss the EIS and answer questions at the following drop-in community information sessions:

---

#### FRIDAY 26 AUGUST 2016

##### Grafton Shopping World

52 -74 Fitzroy Street, Grafton NSW 2460  
12pm-3pm

##### Grafton Library

126-144 Pound Street, Grafton NSW 2460  
4pm-7pm

---

#### SATURDAY 27 AUGUST 2016

##### Grafton Library

126-144 Pound Street, Grafton NSW 2460  
9.30am-12pm

---

#### FRIDAY 2 SEPTEMBER 2016

##### Grafton Shopping World

52-74 Fitzroy Street, Grafton NSW 2460  
12pm-3pm

##### Grafton Library

126-144 Pound Street, Grafton NSW 2460  
4pm-7pm

---

#### SATURDAY 3 SEPTEMBER 2016

##### Grafton Library

126-144 Pound Street, Grafton NSW 2460  
9.30am-12pm

---

---

## Contact us

HAVE AN ENQUIRY OR COMMENT ABOUT THE PROJECT?



1800 813 204



[WWW.INSW.COM/PROJECTS-NSW](http://WWW.INSW.COM/PROJECTS-NSW)



[NGCCinfo@INSW.COM](mailto:NGCCinfo@INSW.COM)

---